

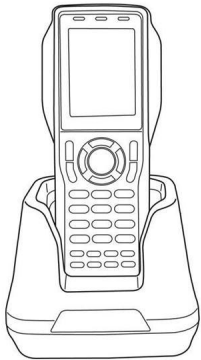
# PT-20 Portable Data Collector

## Quick Start Guide

**ARGOX**  
Empower the Barcode

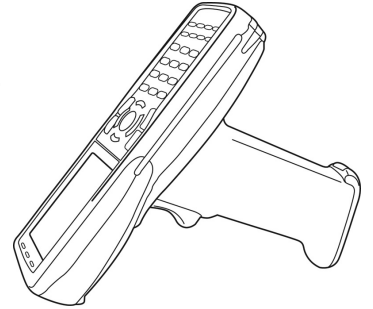
<http://www.argox.com>

See User Manual for more information



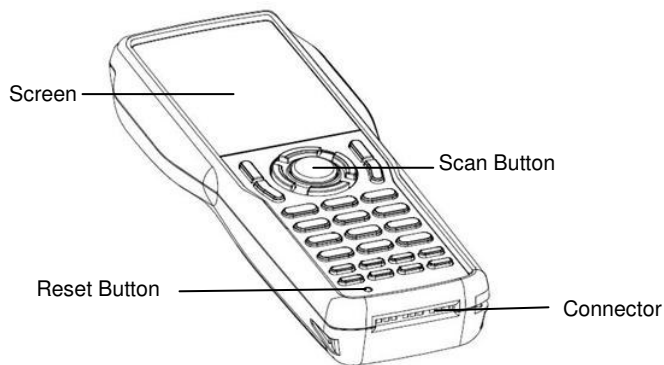
### **Charging the Main Batteries at least 16 hours for the first time**

- It may take up to 2 hours to fully charge the empty backup battery. **The first time charge should be for at least 16 hours to insure a proper charge**
- After you have initially charged your device for about 8 hours, the device is ready to be used.

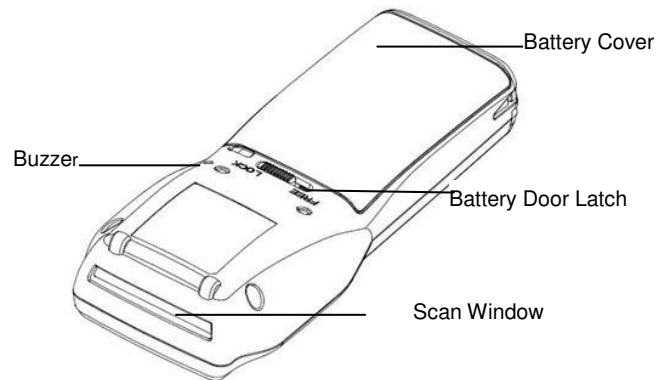


## Feature

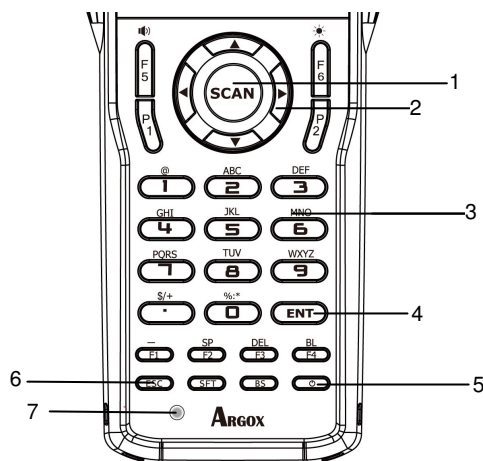
### Front View



### Back View



## Keypads and Function Buttons



1. Scan key
2. Cursor key
3. 10-key pad
4. Enter key
5. Power key
6. ESC key
7. Reset

### **SFT key**

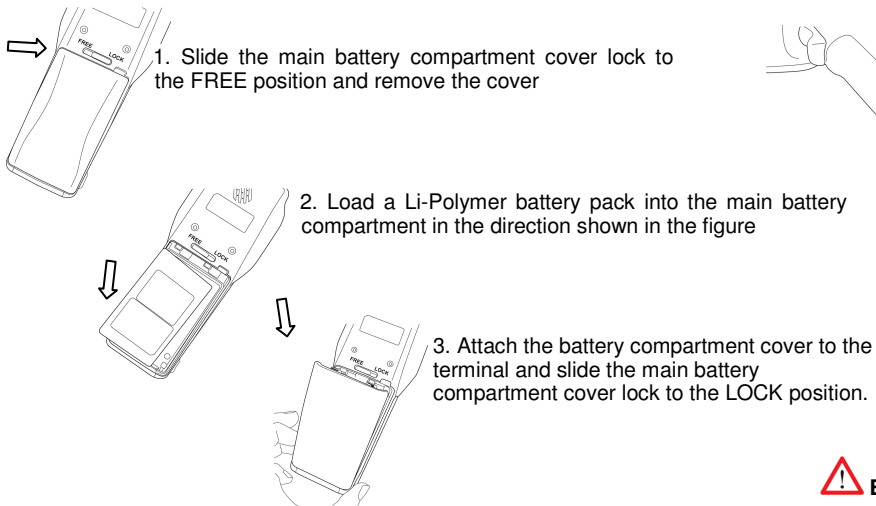
Switches between the character input mode and the number input mode. [abc][ABC] lit on the LCD screen indicates the character input mode. When [123] is lit, the terminal is in the number input mode.

### **Function key**

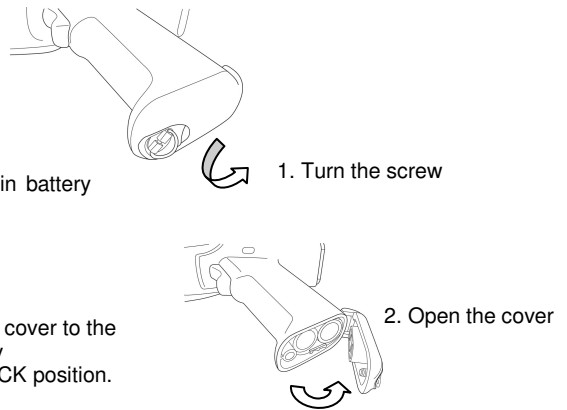
- F1 (-): Inputs the minus (-) sign
- F2 (SP): Inputs a space
- F3 (DEL): Deletes a character
- F4 (BL): Turns the key lights ON and OFF
- F5 ( ): Increases buzzer volume
- F6 ( ): Increases LCD backlight
- P1: Decreases Buzzer volume and program 1 (for user SDK define)
- P2: Decrease LCD backlight and program 2 (for user SDK define)

## 1. Installing the Battery

### Install or replace the main battery in the terminal



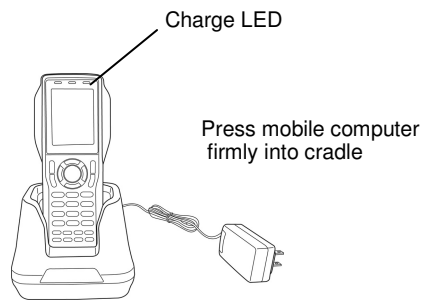
### Install or replace the main battery in the gun grip



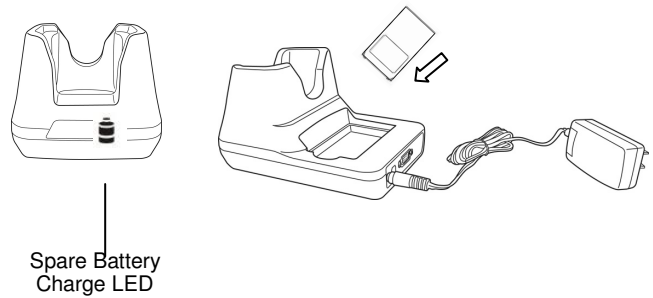
 **Be sure to turn the terminal off before you do this**

## 2. Charging the Battery

Red = Normal charge / Green = Full Charge

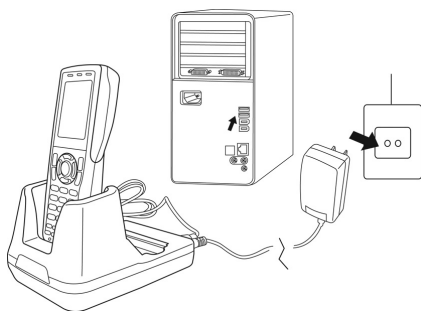


Single slot Serial / USB Cradle



## 3. Communication with Host

The PT-20 portable data collector let you link to a host computer through the CRD-20 cradle for data communication.



### Support Information

More Information on the PT-20  
Visit the Argox Web site [http:// www.argo.com](http://www.argo.com)

Setting up, Using and troubleshooting the PT-20  
PT-20 User's Manual  
Available at [http:// www.argo.com](http://www.argo.com)



49-P2001-001 Rev. A – November 2008