

XP-3300E Series

www.posiflex.com

POSIFLEX
Your Success is Our Vision



Specification	XP-3312H-E	XP-3315H-E
Processor	Pine View D525 1.8 G / 1 M Cache CPU (Dual Core)	
System Memory	DDR3 800 MHz, SO-DIMM socket x 1, max 4 GB, default 1 GB	
Storage Device	2.5" SATA HDD or SSD (Optional)	
Power Supply	12V DC power, 120W	
Audio	Buzzer only	
OS support	Win7 / Win XP Pro / POSReady 7 / POSReady 2009 / Linux	
Display		
LCD	12" TFT LCD, 1024 x 768 resolution	15" TFT LCD, 1024 x 768 resolution
Touch Function	Resistive, 5-Wire, USB Interface	
Brightness Control	By digital push button	
Tilt Adjustment	From 14° to 55°	
Connectivity		
LAN Port	10 / 100 / 1000 Mb	
Serial Port	DB9 x 2, RJ-45 x 1 (Optional RJ-45 to DB9 cable), with 5V support on COM2 / COM3, 12V support on COM2 / COM3	
PS/2 Keyboard	By internal cable (Optional)	
UPS Port	Yes, battery (Optional)	
Standard USB Port	4	
VGA Port	D-SUB, 15 pins, with 12V power for Posiflex LCD monitor	
CR Port	1, control 2 CR	
Printer		
3" Thermal Printer	150 mm/sec, 80 mm paper width	
Cutter	Auto cutter	
Physical Dimension		
Dimension (W x D x H in mm)	325 X 386.2 X 298.1	375 X 386.2 X 395
Weight (N. W. in kg)	6.24	6.83
Environment		
Operation Condition	0°C - 40°C, 20%RH - 90%RH (Equipped with HDD) ; 0°C - 50°C, 20%RH - 90%RH (Equipped with SSD)	
Storage Condition	(-20°C) - 70°C, 10%RH - 90%RH	
Options		
MSR	Integrated, 3 tracks or JIS-II	
PD-2606U	VFD, 2 x 20, rear mount	
PD-330U	LCD, 2 x 20, rear mount	
PD-76X4	240 x 64 dot graphics LCD, default 200 mm pole	
PD-2605 / PD-2605U	VFD, 2 x 20, default 200 mm pole	
PD-309 / PD-309U	LCD, 2 x 20, default 200 mm pole	
SSD	8 G minimum	
LM/TM-2212	12" 2nd LCD display or touch LCD display with attachment SD-360	
UPS Battery	2300 mAh / 12V	
Certifications		

XP-3300E Series

Advanced All-in-One FanFree POS Terminal



Design and Manufacturing In Taiwan by Posiflex Technology Inc.
** The product information and specifications are subject to change without prior notice.

2012 XP33Q3C1

POSIFLEX Posiflex Technology, Inc.
Headquarters
No.6, Wuquan Rd., Wugu Dist., New Taipei City
248, Taiwan (R.O.C.)
Tel: +886 2 2299-1599 Fax: +886 2 2299-1819
sales@posiflex.com.tw www.posiflex.com

Authorized Distributor / Reseller

www.posiflex.com

XP-3300E Series

Posiflex presents the fanfree XP-3300E series as an advanced all-in-one POS terminal.

The XP-3300E series offers touch screen, printer and MSR in a tightly integrated package to bring retailers space-and-cost saving benefits. Adding Intel Pine View Dual Core 1.8GHz CPU and 1000Mb Ethernet that bring efficiency into daily operation, as well as plenty of ports such as USB, Serial, VGA and CR for a wide range of applications. With the well-executed design, the XP-3300E series showcases unmatched value.

XP-3300E series is all-in-one type with high performance for retailers to run mass transaction data.



Key Features

- ▶ 15" LCD with 1024 x 768 resolution or 12" LCD with 1024 x 768 resolution
- ▶ Equipped with Intel Pine View D525 Dual Core 1.8 GHz and DDR3 memory
- ▶ All-in-one integrated system with touch screen, thermal printer and MSR (Optional) for space saving
- ▶ 3" thermal printer with auto cutter
- ▶ Fanfree design boasting quiet and anti-dust features
- ▶ Aluminum die casting design for efficient cooling
- ▶ Thermal printer with "one-button cutter blade retract" design to clear paper jam easily
- ▶ Special "drop-load" design for easy printer paper roll loading
- ▶ UPS (Embedded on main board developed by Posiflex) support to avoid sudden power loss
- ▶ User-friendly mechanism for system upgrade and easy maintenance
- ▶ High quality, rock solid design with easy maintenance in mind



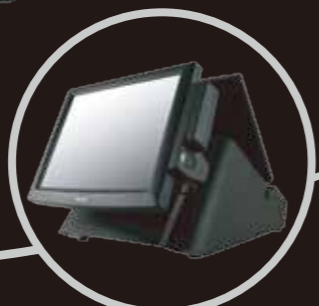
Adjustable LCD



With customer pole display



With rear mounted customer display



With MSR and finger print sensor



With 2nd display LCD

Resistive touch screen :
15" or 12" LCD

Fan-free design boasting
quiet and anti-dust features



3" thermal printer with
auto cutter



System and printer status LEDs,
power switch, brightness control
buttons



Magnetic stripe reader
(MSR)(Optional)